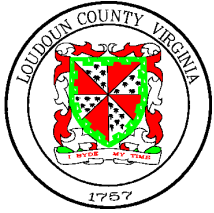


Dept. of General Services
Public Works Division

Stormwater Management

Boyd Church
Senior Stormwater Engineer

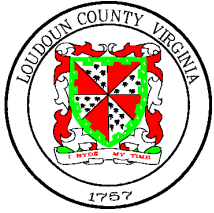


Illegal Stormdrain Dumping

What are some of the “common” IDDE problems?

- **Restaurant Grease**
- **Paint clean up**
- **Marble Cutting**
- **Others-dumpster
juice**

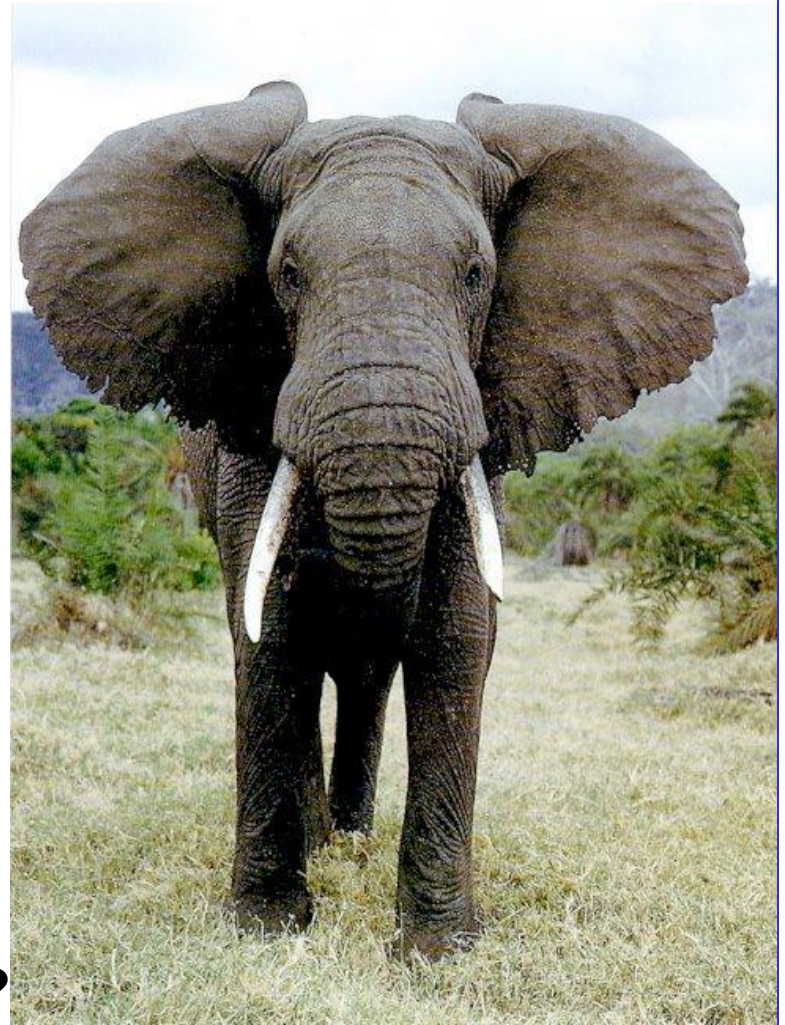


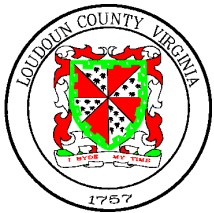


Discharge Identification

Surveys

- ***IDDE Surveys***
- ***County Staff-routine inspection***
- ***Contractor-identifying new structures***
- ***Citizens-Hot line***
- ***How do you find the Culprit?***
How do you eat an elephant?
Is the discharge still occurring?
What else will you find?



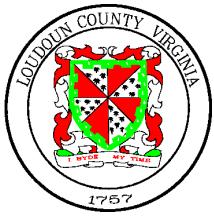


Marble Cutting Case Study

Large and Small Marble Cutting Operations

- Smaller shops are transient***
- All are water use intensive***
- Most use some type of recycling***
- Disposal of dirty water and sediment is necessary***

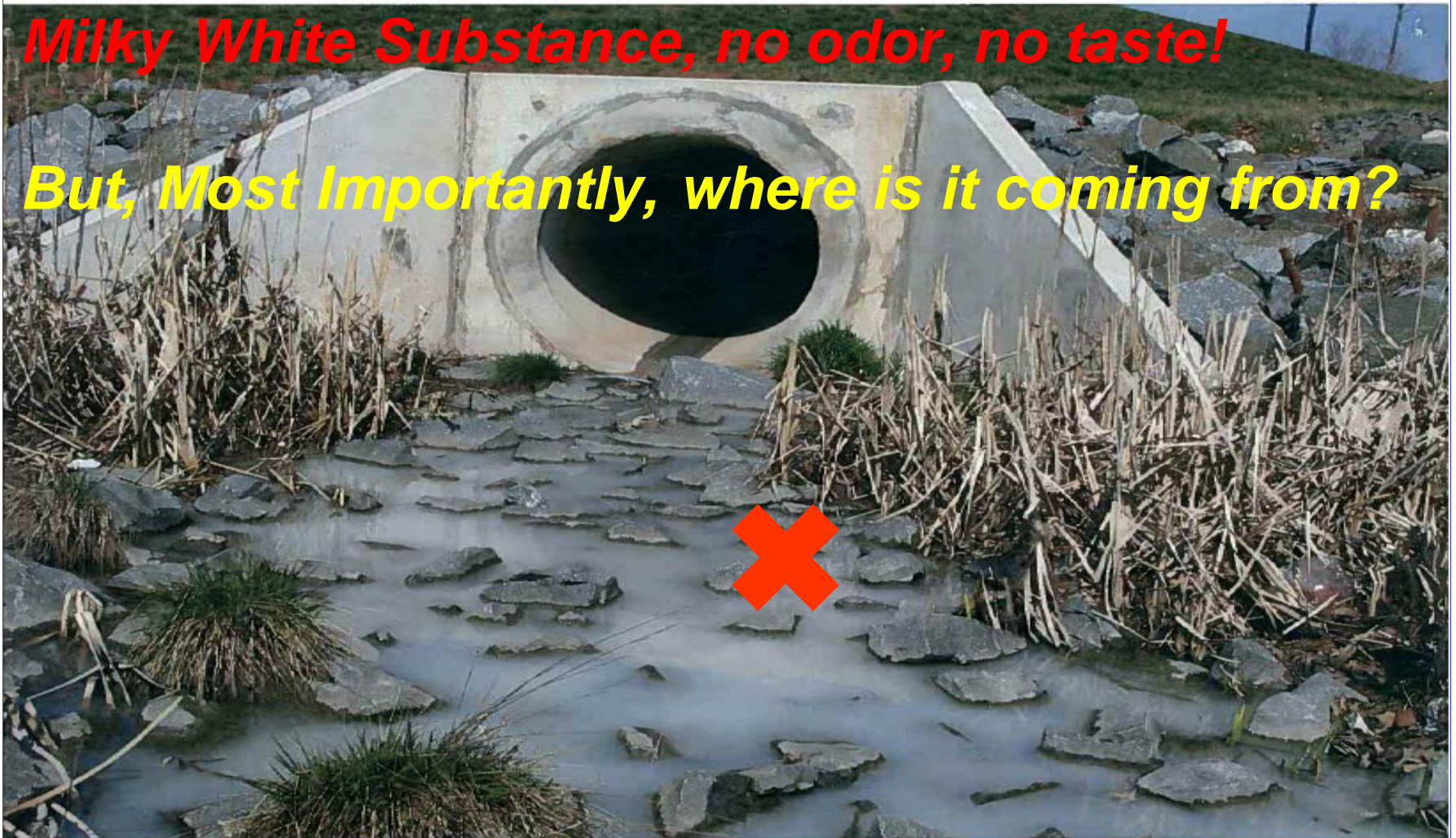


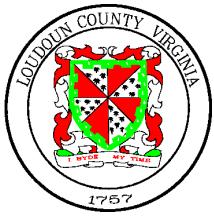


What Is That?

Milky White Substance, no odor, no taste!

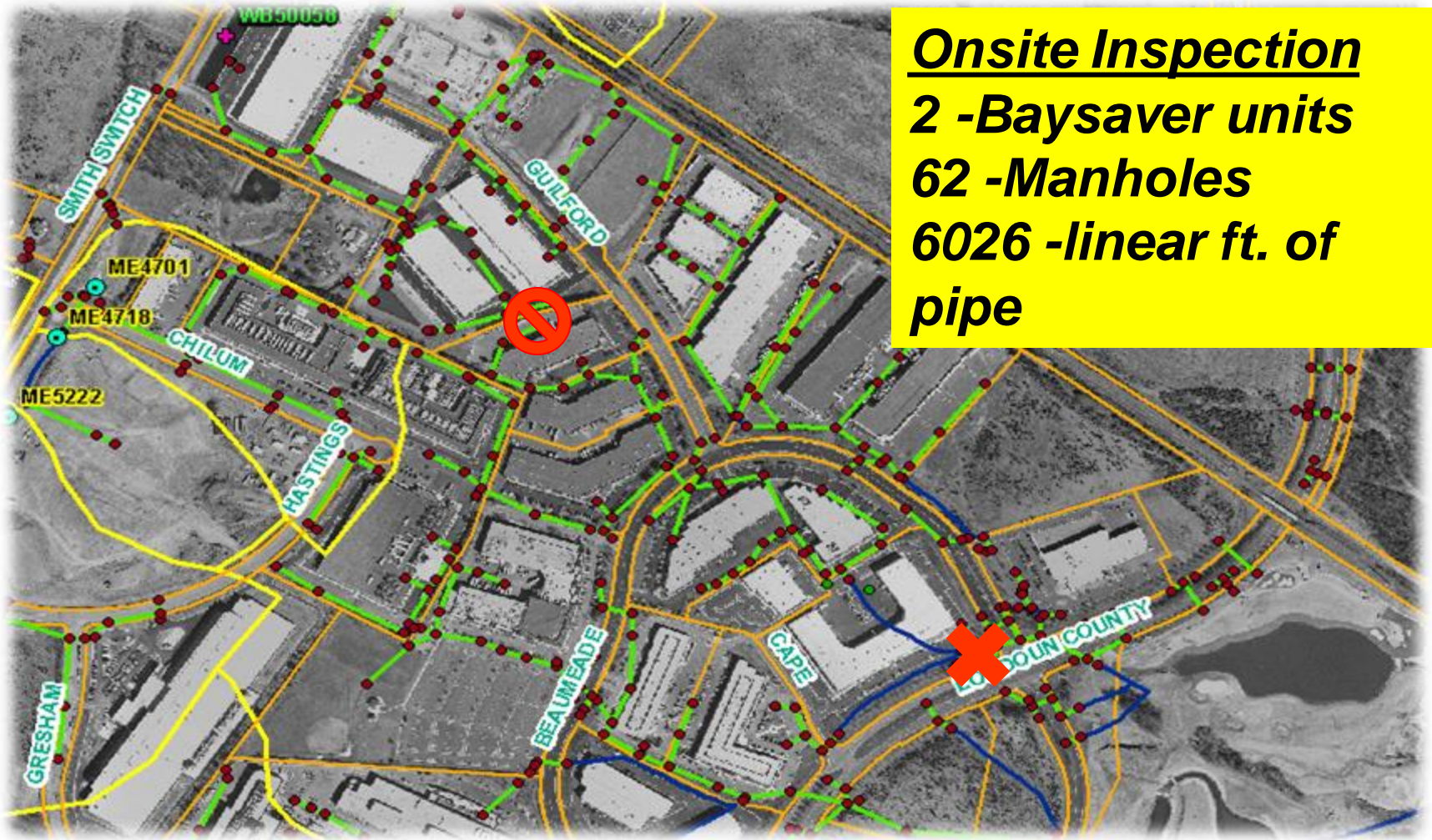
But, Most Importantly, where is it coming from?

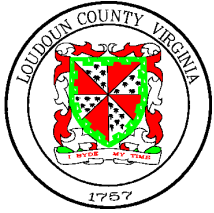




The Hunt Begins

Onsite Inspection
2 -Baysaver units
62 -Manholes
6026 -linear ft. of
pipe



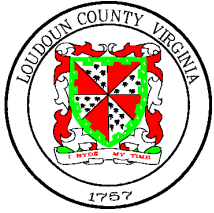


Elimination

Abaco Dehydrator

- Cutting water flows to pit pumped into bags, filtered water is recycled back to cutting water tank.
- Bags are disposed of as solid waste
- Two other IDDE sources were eliminated as well.





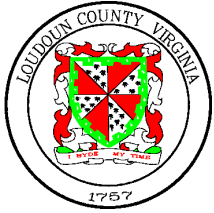
Ultimate Embarrassment

In the fall of 2007, during a maintenance event, a “gray” dry weather flow was observed discharging into a commercial stormwater management device.

Stormwater officials from surrounding counties were on site to observe the maintenance demonstration.



The dry weather flow was traced back to a small marble cutting operation.



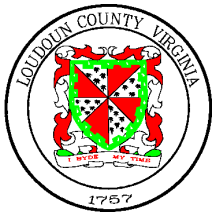
A Simple Fix Was Found





Large Operations Require Large Solutions





Doug's First Boat Launch

